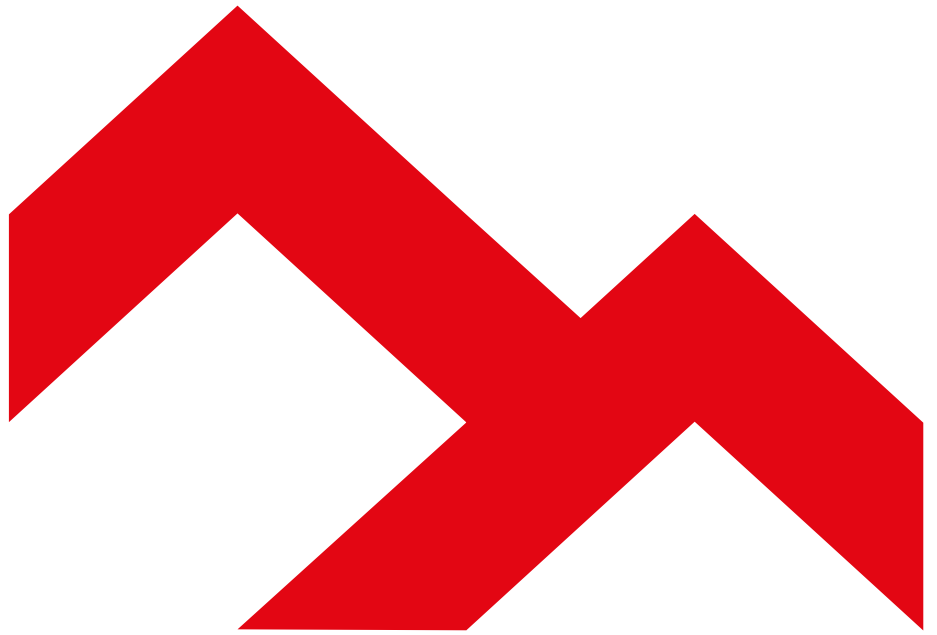


LeapHome





LEAP

**LIVING
ECOLOGICAL
ALPINE
POD**



"an essential dwelling unit, made of refined and durable materials, energetically self-sufficient"



Our mission

The activity of LEAP Factory is based on the continuous research for design solutions that can solve the problem of infrastructure in the natural and urban environment. Our aim is to think of the relation between man, nature and artefact in a new way. Our test environment is the alpine territory.

A new approach to landscape that aims to redefine the culture of dwelling, of the workplace and of living. The symbiosis with environmental and energetic sustainability is for us a key design issue. We think it possible to regenerate the common vision of inhabited places with

new solutions that respect the identity and the environmental and historic assets of the natural landscape. These solutions will lead to future changes by preserving, and even enriching, the great diversity and quality of the landscape that we have inherited from the past.

All LEAP Factory products are produced industrially and conceived for “zero impact dwelling” in respect for nature. They are conceived to minimise on-site operations and to reduce soil consumption and alteration. The complete reversibility of LEAP Factory products highly reduces their environmental footprint, allowing life



Quality and innovation

LeapHome is an innovative building system based on the important experience we have gained working at high altitudes. Our philosophy is founded on meticulous engineering and fully integrated numeric control industrial prefabrication. All the components of the building are produced with ecological, durable and very high quality materials. All these factors guarantee high quality standards. The outer shell is designed for a high energetic efficiency, which provides substantial comfort and reduces energy consumption. The integration with reliable systems for the production of energy from renewable sources permits a totally independent functionality of the building. Purposely studied advanced technological equipment solve any need for management and control. From air conditioning to rainwater collection and use, from biological waste sanitation to the most traditional domestic functions.

Well-being and respect for the environment

LeapHome significantly reduces the environmental footprint of the construction process compared to traditional techniques. The industrial production takes place in controlled spaces through optimised processes that eliminate any waste. Invasive and permanent foundations are not needed. Installation by means of dry assembly is very fast, without the use of mortars, adhesives or water. Logistics are minimised. This simplification becomes an important economic advantage that enhances the implicit value of the final product. The building can be extended or modified in time in order to follow the changing needs of use. When the building's function is no longer required it can be easily removed and

relocated in order to restore the original site conditions.

All the materials used are selected for their ecological characteristics and in respect for health. They come from environmentally controlled productions and are free from harmful substances. These qualities are guaranteed by specific certifications.

Beauty and functionality

The housing quality of LeapHome is further integrated with our care for aesthetics, through refined, flexible and ergonomically correct interiors. Carefully selected interior fittings are chosen from the best Italian made products and proposed in exclusive combinations.

The interior space is carefully organised and elegantly fitted.

Each aspect is solved with appropriate solutions: safety, lighting, acoustic quality.

The interiors are provided with fully integrated furniture and accessories, though for living with satisfaction.

The personalised design of fittings responds to the desires and needs of each subject.

The ideal home

The described features make of LeapHome an optimal construction system for both permanent and temporary uses.

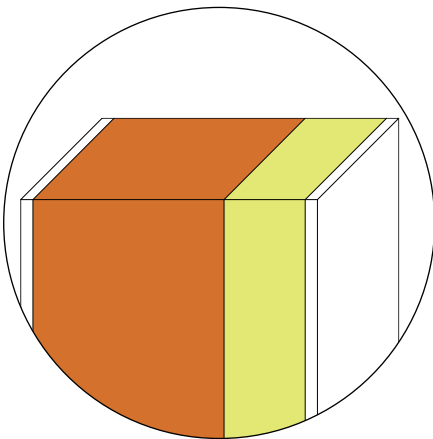
The dimensional flexibility of the different models is thought to satisfy the needs of many residential and commercial applications. New buildings, extension and raising of existing structures, annexes. Always with high standards and a style which can adapt to different contexts. A construction system that satisfies contemporary needs: quality, short time delivery, known costs in advance. Without uncertainty and with a minimum environmental impact. And the guarantee of a single reliable consultant for the whole

"refined, flexible and ergonomically
correct interiors"



Performance comparison

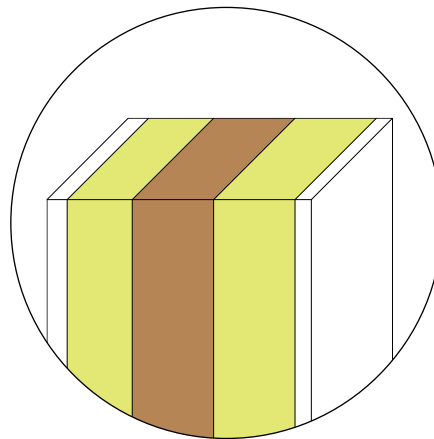
The LeapHome construction system makes use of truly innovative solutions. Our ongoing research and the experience gained in the harsh context of high-altitude have led us to produce components that have a performance far beyond those normally used both in traditional and prefabricated construction. The external walls of the LeapHome shell are so efficient in terms of insulating capacity and reduced thickness that revolutionises the typical parameters of incidence between built surface and internal usable space. A great advantage for the overall efficiency; a step forward in reducing the environmental impact.



Traditional Buildings

brick wall with external insulation

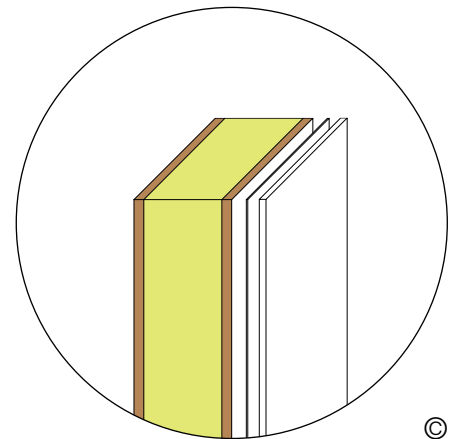
total thickness: **43 cm**
weight per square metre: **130,5 Kg/m²**
thermal transmittance U: **0,23 W/m²K**



Traditional prefabrication

xlam wall with double insulation

total thickness: **32,5 cm**
weight per square metre: **99,0 Kg/m²**
thermal transmittance U: **0,17 W/m²K**



LeapHome

composite collaborating wall system with high performance insulation

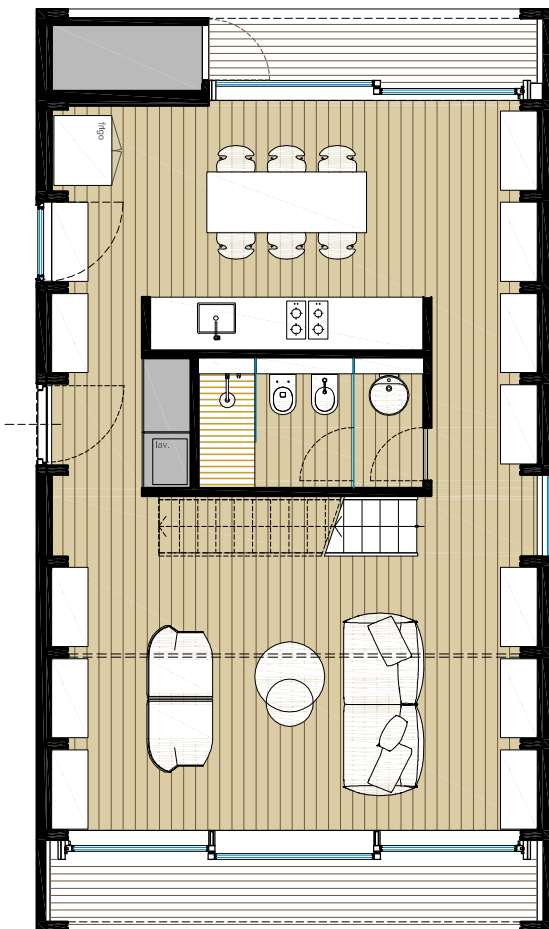
total thickness: **12,4 cm**
weight per square metre: **17,4 Kg/m²**
thermal transmittance U: **0,11 W/m²K**



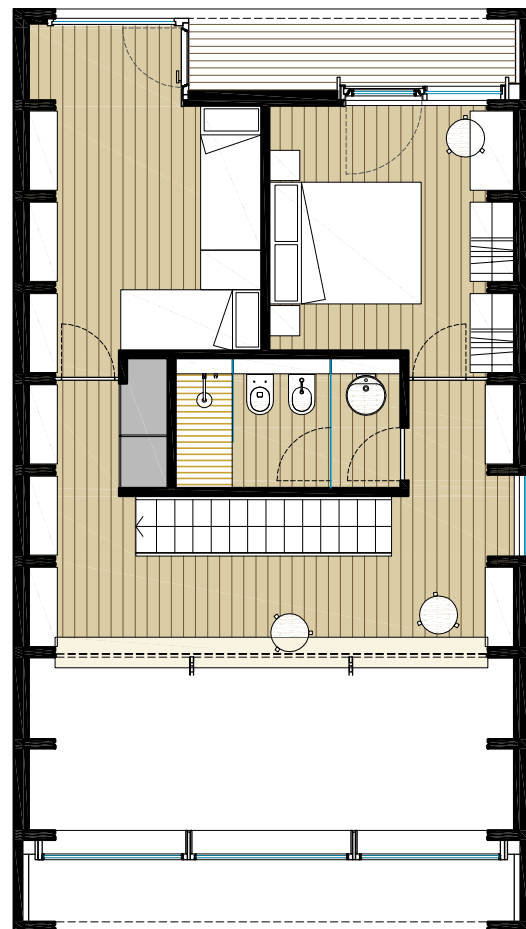
The models

frame

A simple design for an iconic form with great expressive strength. The wooden portal supporting structure rhythmically defines the internal space and supports the internal fixtures. The size of the system can vary: two widths at 6,8 and 8,4 metres and a modular length at a 1,2 metre pitch. The height can be one or two floors high. We propose different internal configurations and it is possible to have personalised fittings.



ground floor



first floor

"the outer shell is designed for a high energetic efficiency, which provides substantial comfort and reduced energy consumption"



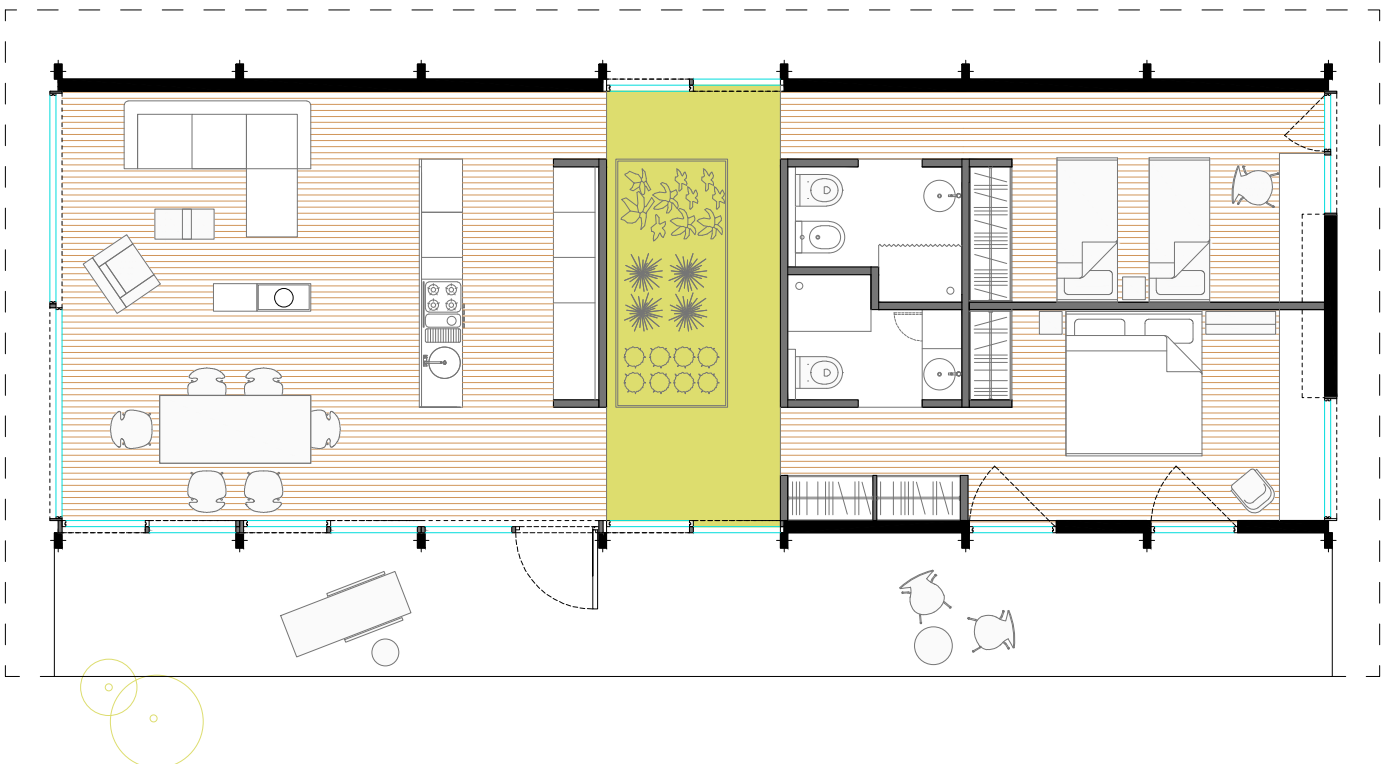
The models

landscape

An extremely flexible program, designed for the enjoyment of the surrounding nature and to maximise the benefits of bio-climatic dynamics.

The main façade faces south and is protected from direct summer sunlight by the wide eaves of the single pitched roof. The outer shell can be produced to choice between opaque and glazed for its whole extension. It opens the interior space in continuity with the porticoes and the garden.

The elegant wooden supporting structure defines the interior space keeping it free from given obstructions and allowing for many different distributive layouts.



"LeapHome significantly reduces the environmental footprint of the construction process compared to traditional techniques"



"these solutions will lead to future changes by recognising the great diversity and quality of the landscape that we have inherited from the past"



Each building is unique

The choice of the appropriate model is only the beginning of the configuration process for your home. The outer shell can be conformed in different layer packs that favour technological performances, ecology and price. The interior fitting is proposed in a number of optimal configurations according to different uses. It can also be personalised according to your specific needs. The overall

finish, internal and external, can be chosen amongst a range selected by LEAPfactory experts.

The technological provisions are specifically designed for our construction system. Optional packages are available for personalisation such as green energy production system, air-conditioning, lighting, domotics, furniture and waste management.

PHOTOVOLTAIC PACK



photovoltaic systems with integrated cells in the modular outer shell, for the production of electric power. Appropriate power and configurations for different uses and environmental conditions.

SOLAR THERMAL PACK



solar thermal systems for the production of hot water. Appropriate size and configurations for different uses and environmental conditions.

LIGHTING AND DOMOTICS



remote control monitoring and management. Energy saving LED technology internal and external lighting.

AIR-CONDITIONING



radiant technology electric systems with heat recycling. Integrated in the shell for better living comfort.

COOKING APPLIANCES



electric, to avoid the use of open flame systems and favour safety.

SANITATION SYSTEM



for biological liquid waste treatment. As an addition to the sanitary facilities it permits the independent management of sewage avoiding the dispersion of polluting substances.

OPENINGS



choice of number and position of openings based on the distribution layout and the exterior context.

EXTERNAL AND INTERNAL FINISHES



in addition to the standard sidings a wide variety of finishes is available. Green roof, exterior metal sheet cladding, wooden floor, PVC paving, customisable interior surfaces.

FURNISHING SOLUTIONS



customisable interior and exterior fittings.

Even the production process is innovative

Easy

To build a new house is a considerable effort. The aspects to be considered and problems to solve are many. LEAP Factory provides all the expert competences and professional expertise to respond to your needs. Our technicians analyse the ground, local planning regulations, local climatic conditions and landscape. A team of designers gives shape to your idea of home and provides a perfectly functional building with interiors according to your taste. All of this with a single contact to receive your questions and give you the best answer.

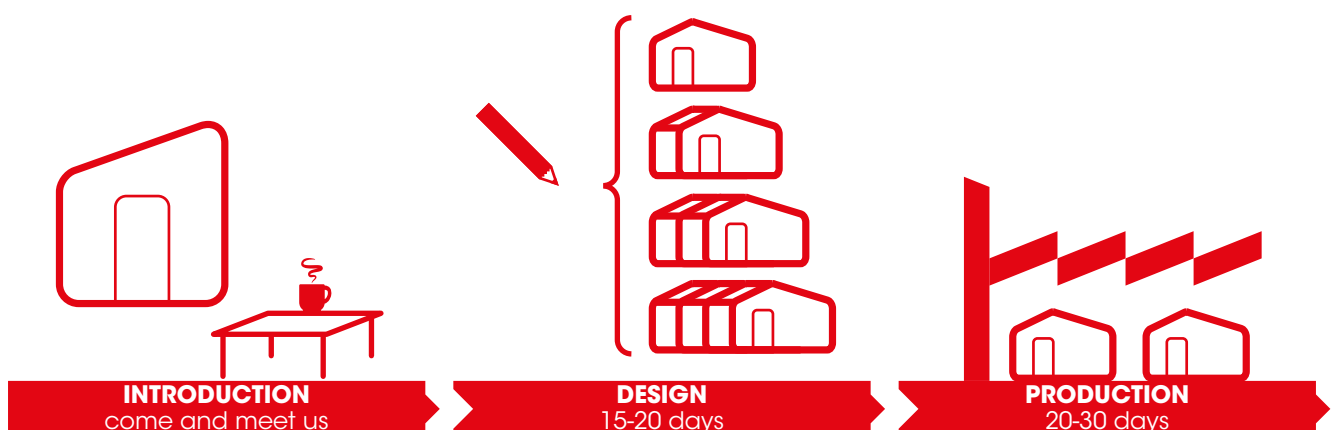
Fulfilling

The home you desire. Ready to accommodate you. Fully equipped.

LeapHome is a new building system that solves many critical and obsolete aspects of traditional construction, both in brickwork and in wood.

Safe

A full plan straight from the start will define with certainty costs, timing and quality. Without hindrance, without risk.



An effective and transparent process

Contact

Call us, we will give you every information you need. At our headquarters in Torino you can see the solutions we propose.

Site Survey

Our technicians will visit your plot of land to assess its potentialities.

Local Planning assessment

Essential to work out all possible options from the very beginning.

Your budget, your ideas, your project

We start from your specific requirements. If you have a project from your own consultant we can produce it together.

Winning solution and reliable estimate

We will work out the best solution for you and define a clear cost right from the start.

Industrialised production

The best technologies and most performing materials, all put together with the quality of numerical control.

Installation

The quickest. The cleanest. The most ecological.

Reversibility

A LeapHome may last forever, as any other traditional building. Most likely your needs will evolve more rapidly. The LeapHome can be modified and extended without waste and at contained costs. You can even think about moving it to a new location!



Smart design

to use “less”, in harmony with the environment

LeapHome has been conceived with a sustainable planning: it is meant to last, to be flexible and to guarantee a serene environment to live in. The system is built on a human scale, using only what is necessary, taking care of every detail. Every component, from the structure to the fitting is designed to offer you the best comfort. The tradition of the architecture and the culture of living for the style of the future.





Efficient materials

high performance aesthetical quality

Materials have been selected for their thermal, structural and aesthetical performances. The client can choose among an ample range of natural and contemporary finishes. The LEAP materials are renewable and recyclable, hygienic and long lasting. We use FSC certified wood and raw materials of checked origin.





Energy saving

high tech and low impact

The LeapHome system is conceived to consume less energy through its well insulated envelope.
The buildings integrate devices for the production and use of green energy.





Healthy environments

healthy homes, happy homes

LEAP provides healthy environments, using material without harmful emissions, hygienic and natural. The accurate project of the isolation avoids any formation of condens or mold in the walls. The refined and ergonomic insides offer you high quality spaces for a life full of comfort.





Construction system

good bye old habits! A new way of building right for the future

the traditional way of building is often inefficient, expensive and dirty. The LEAP technology offers a rapid and light answer reducing the costs of construction. The LeapHome system doesn't need onerous foundations; few days are enough to complete the building, including furnishing and technological fittings. Every element is produced in factory with numerical control system, to avoid any mistake. The industrialized productive cycle allows a constant control of the quality and the reduction of wastes. The construction system is cleaner, it doesn't use water or create dust and annoying noises. We can say that this is the construction process with the lowest environmental impact on the marketplace today.





Long life

durable qualities and values

The maintenance of elevated performances is equiparable to the houses built with traditional techniques.

The proof, is the experience LEAP Factory matured in the constructions for extreme environments, united to the guarantees required by law.





Come and visit us!

The LEAP Factory team is capable of following the entire production process for the construction of your home: for you, for your work.

From the best site localisation to the official opening ceremony.

Site surveys and geological investigations;
authorisation and testing paperwork;
consulting advice for required funding;
installation and maintenance management;
opening event communication and advertising.

Do not hesitate to contact us. Together we will find the winning solutions to fulfill your best ideas!





LEAP ©

di Luca Gentilcore e Stefano Testa.

Tutti i diritti riservati
/ all rights reserved

LEAP Factory

via lodi 23

10152 torino, italy

tel. +39.011.4548979

www.leapfactory.it

info@leapfactory.it



